

**Southern Idaho DAU (GMUs 38, 40, 41, 42, 45, 46, 47, 52, 52A, 53, 54, 55, 56, 57, 63, 63A, 66, 66A, 68, 68A, 69, 70, 71, 72, 73A, 74, 75, 76, 77, and 78)**

Abstract

During 2008, the Southern Idaho DAU was occupied by 1 documented wolf pack and 1 documented other wolf group (Figure 18; Table 10). No breeding pairs were documented in this DAU. Eight mortalities were documented (8 lethal control). Confirmed livestock or dog losses were attributed to the B381, Falls Creek, Galena (neighboring DAU pack), and Moores Creek (neighboring DAU pack). The eight controlled wolves were removed from B381, Falls Creek, and Moores Creek. One wolf was captured and radiocollared.

Background

This DAU include the Snake River Plain which is the most cultivated and metropolitan landscape in the state. The DAU does include several mountain ranges spanning from the Owyhee's in the west to the Portneuf's in the east. These ranges might receive dispersing wolves but potential for livestock conflicts would be high. The DAU also contains some protected areas including Craters of the Moon National Monument and the Idaho National Laboratory. The current human altered state of the landscape offers little to support a wolf population. The climate tends to be hot and dry in the summer and cold and wetter in the winter. Temperatures trend from mild in the west to more severe in the east.

Management Direction

The current management strategy for wolves in this DAU is to stabilize the wolf population in the Southern Idaho DAU near current levels. Wolves are occasionally showing up and establishing residence in this DAU. However, conflict with livestock generally facilitates subsequent removal. Thus, management objectives are currently being met.

Documented Resident Packs

*Falls Creek*

Female B338 was being monitored by radio-telemetry at the onset of 2008. Biologists counted a minimum of 2 pups in this pack. Six wolves, including both pups, were killed during control actions in response to livestock depredations. These 6 wolves constituted the entire pack, thus, this second year pack was no longer extant by December 2008. Although this pack was reproductive, it was not counted as a breeding pair for 2008.

Other Documented Wolf Groups

*B381*

This wolf was captured during a control action. It was implicated in livestock depredations and later removed. It is believed to have been a lone wolf, was not reproductive, and was not counted as a breeding pair for 2008.

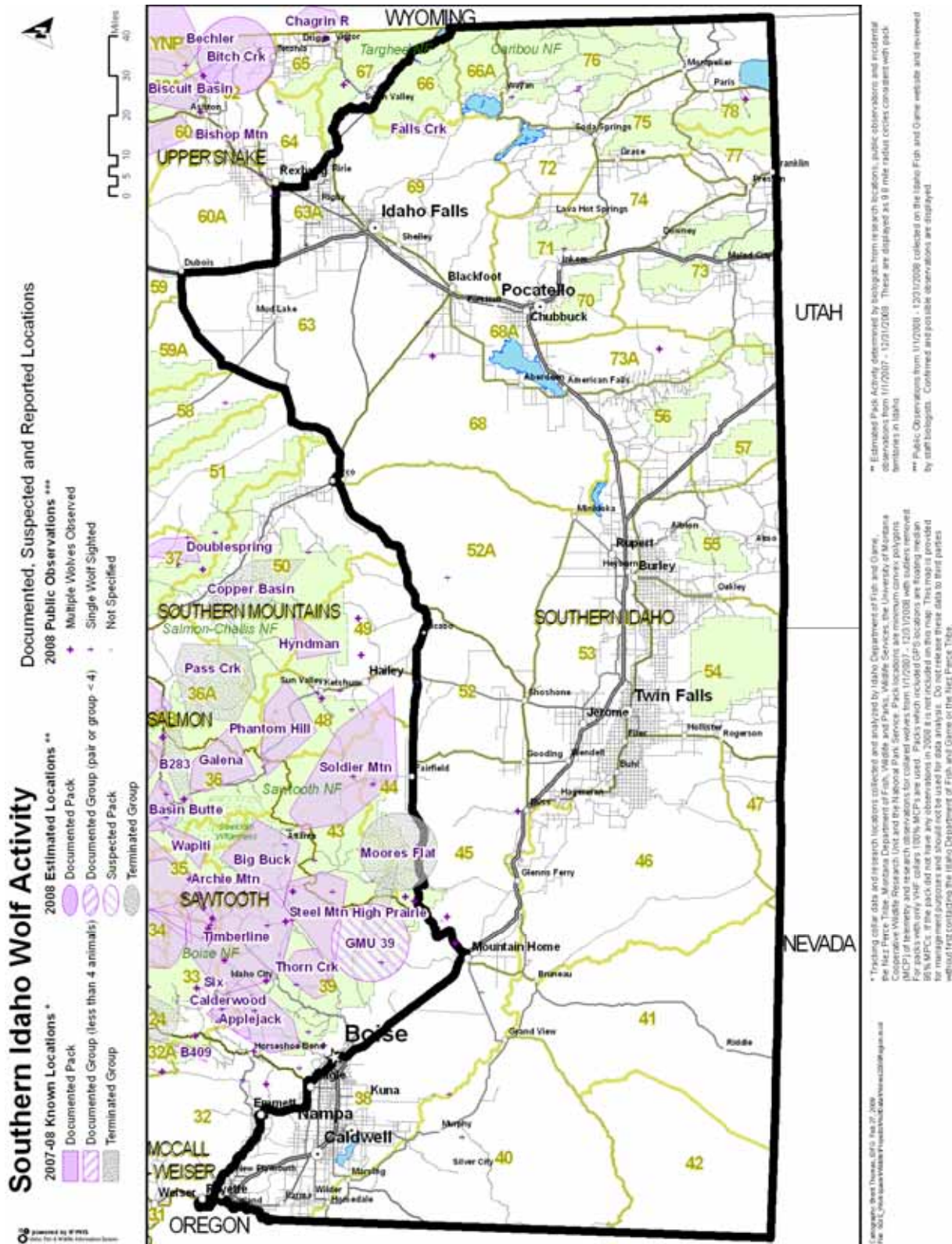


Figure 18. Distribution of documented and suspected wolf packs, other documented groups, and public wolf reports in the Southern Idaho DAU, 2008.

Table 10. End of year summary of estimated pack size, natality, mortality, dispersal, monitoring status, wolf captures, and livestock depredations for documented and suspected wolf groups within Idaho Department of Fish and Game Southern Idaho Data Analysis Unit, 2008.

Wolf group <sup>a</sup>	Min. no. wolves detected <sup>b</sup>	Reproductive status		Documented mortalities				Known dispersal	Monitoring status			Confirmed & (probable) wolf-caused livestock losses			
		Min. no. pups prod. (died) <sup>c</sup>	Reported as		Natural	Control <sup>e</sup>	Other human <sup>f</sup>		Unknwn <sup>g</sup>	Active radio collars	No. wolf captures <sup>h</sup>	No. wolves missing <sup>i</sup>	Cattle	Sheep	Dogs, horses*
			reprod. pack	breeding pair <sup>d</sup>											
<b>DOCUMENTED PACKS</b>															
Falls Creek	0	2(2)	YES	NO	0	6	0	0	0	0	0	0	2(1)	0	<1>
<b>SUBTOTAL</b>	<b>0</b>	<b>2(2)</b>			<b>0</b>	<b>6</b>	<b>0</b>	<b>0</b>	<b>0</b>	<b>0</b>	<b>0</b>	<b>0</b>	<b>2(1)</b>	<b>0</b>	<b>&lt;1&gt;</b>
<b>SUSPECTED PACKS</b>															
<b>SUBTOTAL</b>	<b>0</b>				<b>0</b>	<b>0</b>	<b>0</b>	<b>0</b>	<b>0</b>	<b>0</b>	<b>0</b>	<b>0</b>	<b>0</b>	<b>0</b>	<b>0</b>
<b>OTHER DOCUMENTED GROUPS</b>															
<del>B381</del>	0				0	1	0	0	0	0	1	0	0	24	0
Border DAU (Galena)													1(2)		
Border DAU (Moores Flat)						1							1		
<b>SUBTOTAL</b>	<b>0</b>				<b>0</b>	<b>2</b>	<b>0</b>	<b>0</b>	<b>0</b>	<b>0</b>	<b>1</b>	<b>0</b>	<b>2(2)</b>	<b>24</b>	<b>0</b>
<b>UNKNOWN</b>															
<b>SUBTOTAL</b>	<b>0</b>				<b>0</b>	<b>0</b>	<b>0</b>	<b>0</b>	<b>0</b>	<b>0</b>	<b>0</b>	<b>0</b>	<b>0</b>	<b>0</b>	<b>0</b>
<b>DAU TOTAL</b>	<b>0</b>	<b>2(2)</b>			<b>0</b>	<b>8</b>	<b>0</b>	<b>0</b>	<b>0</b>	<b>0</b>	<b>1</b>	<b>0</b>	<b>4(3)</b>	<b>24</b>	<b>1*</b>

<sup>a</sup> Documented packs = territorial groups of wolves usually consisting of an adult male and female and their offspring from one or more generations, and has the potential to reproduce (2 adults of opposite sex). Suspected packs = geographic areas where wolf pack presence was suspected but not verified, or where wolf presence was verified but did not meet documented pack status. Other documented groups = verified groups not meeting either documented or suspected pack status (e.g., lone wolves, potential mated pairs, etc.). Unknown = geographic areas where wolf presence was previously unverified and/or no data on group status was known.

<sup>b</sup> Summing this column does not equate to number of wolves estimated to be present in the population.

<sup>c</sup> Number in parentheses indicates known pup mortality; pup mortalities tallied in the appropriate column in “documented mortalities.”

<sup>d</sup> Breeding pairs are the measure of Federal and State wolf recovery and management goals. A breeding pair is defined as “an adult male and a female wolf that have produced at least 2 pups that survive until December 31 of the year of their birth...”

<sup>e</sup> Includes agency lethal control and legal take.

<sup>f</sup> Includes all other human-related deaths.

<sup>g</sup> Does not include pups that disappeared before winter.

<sup>h</sup> Includes wolves captured for monitoring purposes during 2008. Most, but not all, were radiocollared.

<sup>i</sup> Radiocollared wolves that became missing in 2008.